

WHAT TO EXPECT & STEPS TO TAKE

WHEN BEING PULLED OVER OR APPROACHED BY LAW ENFORCEMENT

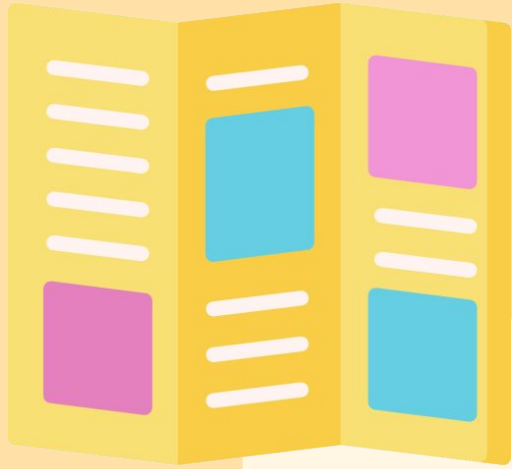
By: Ariona Crutchfield



WHO I AM

- Hi! My name is Ariona Crutchfield
- I am a Criminal Justice major with a double minor in Sociology and Social Innovation & Civic Responsibility
- My current site is High Point's Community Development and Housing Department





THE PURPOSE

The purpose of this project is to create a way for minorities to learn what steps they need to take when being pulled over or being approached by law enforcement.

HISTORICAL INFORMATION

- Police Brutality has been an issue dating back to the early 1800s
- It has been historically perpetrated against individuals in lower socioeconomic levels and the socially marginalized
- Most common during the Civil Rights era; during this time activists would be sprayed down with water hoses, attacked by dogs, and beaten



HISTORY OF LAW ENFORCEMENT

SEPTEMBER 24, 1789

The United States Congress creates the first Federal law enforcement officer, the United States Marshal. 13 U.S. Marshals were appointed by George Washington

1600s

APRIL 1635

The City of Boston establishes a “night watch” in which officers served part-time, without pay

1700s

1800s

1835

Texas created the Texas Rangers, which is the oldest statewide law enforcement agency in America

1838

The First publicly funded, organized police force with officers on duty full time was created in Boston

HISTORY OF THE AMERICAN POLICE OFFICER



RATTLE WATCH - 1700s



EST. 1845



COMMISSIONED OFFICER - 1850s



EST. 1847



U.S. MARSHAL - 1870s



EST. 1889



ROUNDSMAN - 1900s



EST. 1911



PATROLMAN - 1920s



EST. 1912



EST. 1921



EST. 1923



MOTORCYCLE PATROL - 1950s



EST. 1925



EST. 1927



DETECTIVE - 1960s



EST. 1927



STATE TROOPER - 1970s



EST. 1928



EST. 1930



CITY POLICE - 1990s



EST. 1931



EST. 1940



S.W.A.T. - 2000s



EST. 1950

DEFINITION OF CONCEPTS

POLICE BRUTALITY

The use of excessive force or unnecessary force by police when dealing with civilians

POLICE MISCONDUCT

Illegal or unethical actions or the violation of individuals constitutional rights by police officers in their conduct of duties

RACIAL PROFILING

The discriminatory practice by law enforcement officials of targeting individuals for suspicion of crime based on the individuals race, ethnicity, religion, or national origin

TRAFFIC STOP

A routine traffic stop justified if the police officer has a reasonable suspicion that someone is driving without their license or the vehicle is unregistered



PAST, CURRENT, & ONGOING PROBLEMS



PROBLEM #1

Police brutality has caused havoc and distress among individuals across the nation



PROBLEM #3

Black teens hold fear and distrust toward police



PROBLEM #2

To many people are being affected by this issue, which is causing conflict on the trust between law enforcement and citizens



PROBLEM #4

George Floyd's death due to excessive force from a police officer

DO'S AND DONT'S



DO'S

- Keep your hands where the officer can see them
- Stay in your car
- Do what the officer asks



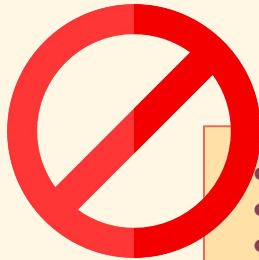
DON'TS

- Do not try to run
- Do not resist
- Do not obstruct the officer
- Do not lie or give false documents

WHAT YOU SHOULD EXPECT WHEN BEING PULLED



- An officer should approach your window and politely ask to see your license and registration.
- They should tell you their reason for stopping you or ask you if you know the reason you are being stopped



What an officer **CAN NOT** do

- Harass you
- Discriminate against you
- Can not search your car unless they probable cause that you have a weapon, there is evidence of a crime in plain view or have a valid warrant to search your vehicle
- ***** If any illegal or unethical activity occurs, you should report it to a supervising police officer in your jurisdiction*****

WHAT YOU SHOULD KNOW

WHERE YOU SHOULD PULL OVER

- Use your turn signal
- Safely pull over to the right
- Make a complete stop in a safe space on the shoulder



DOCUMENTS NEEDED

- Drivers license
- Vehicle registration
 - Shows that your vehicle is registered & whether or not you are the owner
- Proof of insurance
 - It is illegal to drive without car insurance
 - You must always keep your insurance in your car in case you get pulled over or get into an accident

WHY IS THIS A SOCIAL PROBLEM?



#1

- Police brutality effects individuals across the nation directly and indirectly
 - Those who are directly affected are harassed, abused, beat, and violated by police officers who abuse their power
 - Those indirectly affected create anger towards these situations because they see others who are abused by officers

#2

- Families are frequently torn apart because family members are being pulled away, severely injures, & killed by law enforcement

#3

- Minorities have been shown to be mainly targeted by police in arrests and shootings

WHAT HAS CHANGED?



TECHNOLOGY

- The advancement of technology has enabled transparency that could end a vast amount of disputes between law enforcement and citizens
- Dash cameras provide evidence, which leaves little room for police to abuse their power and allow for misconduct of individual

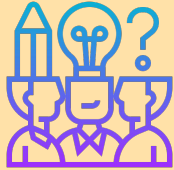


ACTIVISM

- Protesters are pushing for more cameras, so that officers have to take accountability in their actions



STRATEGIES AND SOLUTIONS



STRATEGIES

1. My Project
2. Creating a stronger relationship between the community & the police
3. Building Trust
4. Giving lessons to the youth on what to do



SOLUTIONS

1. My project will be a guide and include all of the information that is needed, and will be something that can be referred back to
2. Creating programs and activities, ensuring that the police department can work with youth who are at risk
3. Monthly meetings between the police department & neighborhood that are high risk
4. Informative speakers/presentations

MY PROJECT

DO'S & DONT'S

DO'S

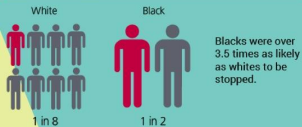
- Keep your hands where the officer can see them
- Stay in your car
- Do what the officer asks

DONT'S

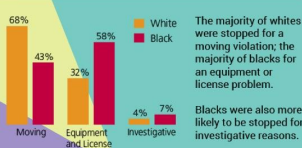
- Do not try to run
- Do not resist
- Do not obstruct the officer
- Do not lie or give false documents

STATISTICS

Population stopped



Reason for stop



THE HIGH POINT POLICE DEPARTMENT

1730 Westchester Drive
High Point, NC 27262
336-883-3224



POLICY. CRIME FIGHTING. COMMUNITY. TRAINING. LEADERSHIP AND DEVELOPMENT.

For more information on crime prevention activities in your area, call the High Point Police Department, or check out their website.
<https://www.highpointnc.gov/2332/Police-Department>



LAW ENFORCEMENT DO'S & DONT'S

BY ARIONA CRUTCHFIELD

TERMS

Police Brutality: The use of excessive force or unnecessary force by police when dealing with civilians

Police Misconduct: Illegal or unethical actions or the violation of individuals constitutional rights by police officers in their conduct of duties

Racial Profiling: The discriminatory practice by law enforcement officials of targeting individuals for suspicion of crime based on the individuals race, ethnicity, religion, or national origin

Traffic Stop: A routine traffic stop justified if the police officer has a reasonable suspicion that someone is driving without their license or the vehicle is unregistered



STOPPED? HERE'S WHAT TO DO

STOPPED IN A CAR?

- Safely pull over to a place out of the flow of traffic as soon as the police officer activates their lights
- Remain in your vehicle
- Stay calm and keep your hands visible on the steering wheel
- If you have passengers, ask them to sit quietly with their hands visible
- Avoid sudden movements or ducking in seats: these actions can alarm the officer
- If it is dark turn your inside lights on when you pull the car over: this can help reduce the officers concerns about possible threats

STOPPED ON THE STREET?

- Be courteous
- Follow all reasonable instructions by the officer
- Keep your hands visible to the officer
- Don't run. It will make you look guilty of something and you could injure yourself
- Don't lie. You could be charged with a crime
- Don't get in the way if an officer is arresting someone you are with into custody. This could cause you to be arrested for interfering.

KNOW YOUR RIGHTS: WHAT AN OFFICER CAN NOT DO

- Harass you
- Discriminate against you
- Can not search your car unless they have probable cause that you have a weapon, there is evidence of a crime in plain view or have a valid warrant to search your vehicle
- ****If any illegal or unethical activity occurs, you should report it to a supervising police officer in your jurisdiction***

MAKE SURE YOU HAVE THESE DOCUMENT

- 1 Drivers License
- 2 Vehicle Registration
- 3 Proof of Insurance

SOLUTIONS TO PREVENT POLICE BRUTALITY

#1

Get educated, learn your rights and how to interact with law enforcement

#2

Record anything unusual, it is always beneficial to catch things on video for proof & justice

#3

Training to improve relations & defuse the sorts of deadly racially charged confrontations that has divided the nation

GET HOME SAFELY: 10 RULES OF SURVIVAL

Get Home Safely: 10 Rules of Survival



CONCLUSION



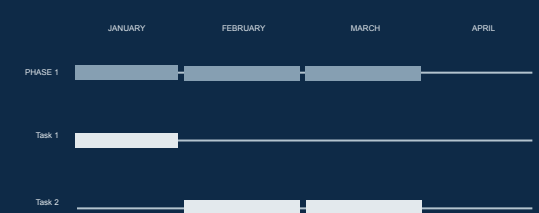
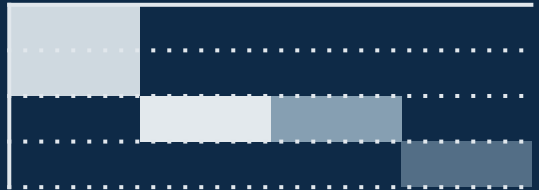
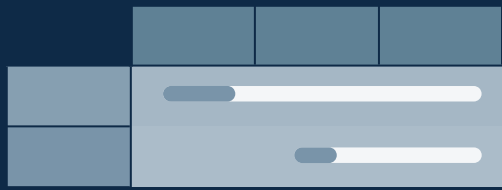
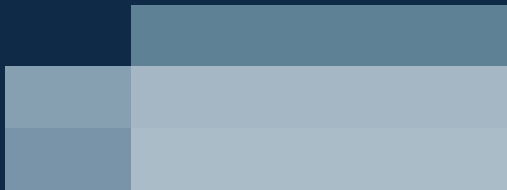
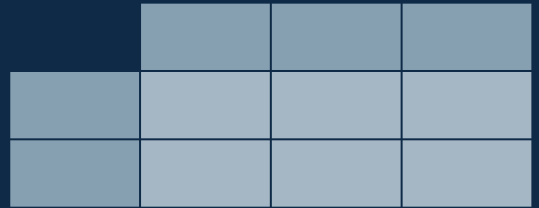
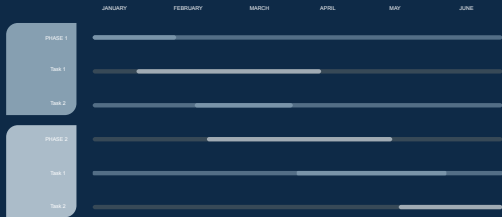
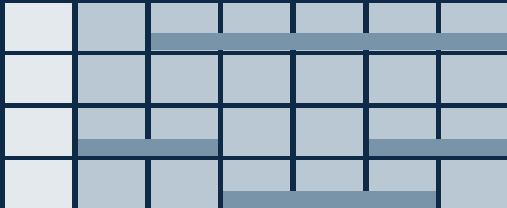
- We know that all police officers aren't bad so we want to try to minimize the fear of law enforcement as much as possible. This is one of the reasons that I believe a relationship should be created between police officers and the community. In result of this solution, I hope that it can build trust and minimize fear in the minority community.

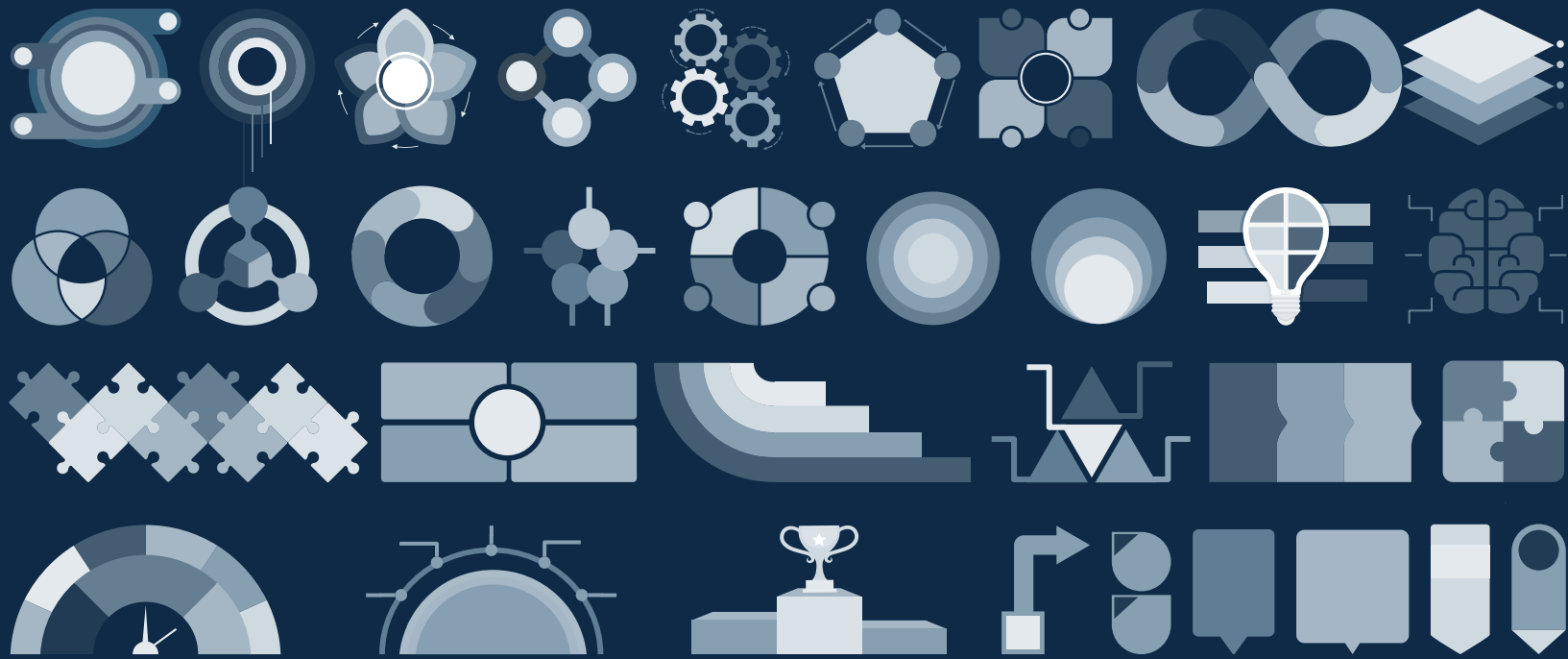


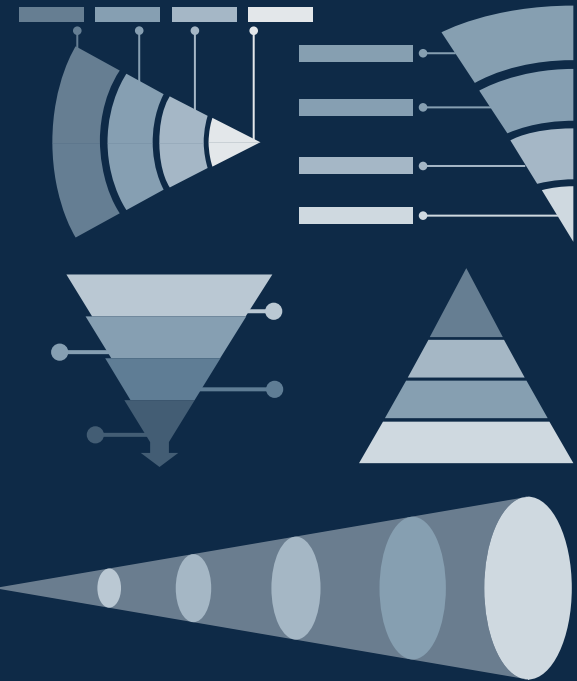
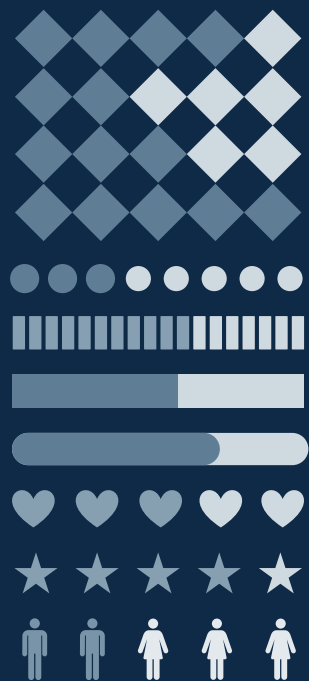
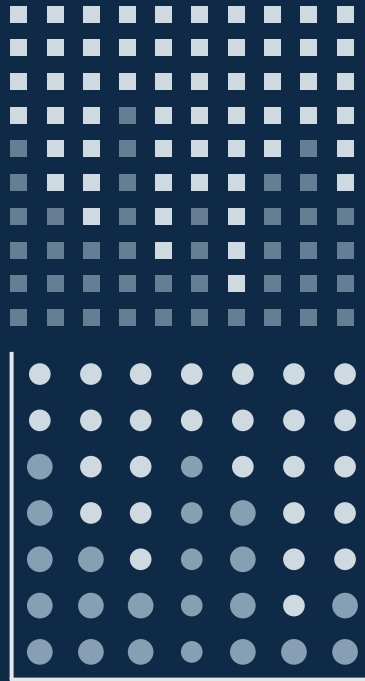
THANK
YOU!!

RESOURCES

- <https://www.britannica.com/topic/police/Early-police-in-the-United-States>
- <https://nleomf.org/memorial/facts-figures/dates-in-law-enforcement-history/>
- <https://sites.uab.edu/humanrights/2021/12/08/the-history-of-policing-in-the-us-and-its-impact-on-americans-today/#:~:text=The%20history%20of%20policing%20can,first%20unofficial%20police%20in%20America.>







...and our sets of editable icons

You can resize these icons without losing quality.

You can change the stroke and fill color; just select the icon and click on the paint bucket/pen.

In Google Slides, you can also use [FlatIcon's extension](#), allowing you to customize and add even more icons.



Educational Icons



Medical Icons



Business Icons



Teamwork Icons



Help & Support Icons



Avatar Icons



Creative Process Icons



Performing Arts Icons



SEO & Marketing Icons

