

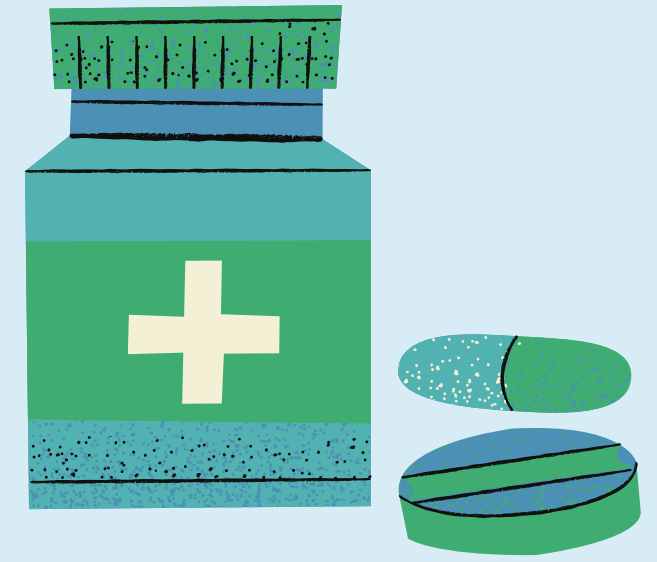
# Medical Short Hand for Triage Staff

**“qd” = Daily**  
**“QAM” = Every morning**  
**“QHS” = Every night**  
**“BID” = Twice a day**  
**“TID” = Three times a day**  
**“QID” = Four times a day**  
**“PRN” = As needed**  
**“qod” = Every other day**  
**“po” = By mouth**  
**“p.c., p/c” = After meals**  
**“QWK” = Every week**  
**“NKDA” = No known drug allergies**



**Hydrochlorothiazide (HCTZ)**  
**Potassium (K+)**  
**Ferrous (Fe) Sulfate**  
**Extended Release (XL)**

# Medications



## Cardiovascular

- Amlodipine/Norvasc
- Carvedilol/Coreg
- Hydralazine/Apresoline
- Lisinopril/Zestril
- Lisinopril and hydrochlorothiazide (HCTZ)/Zestoretic
- Losartan/Cozaar, Losartan and HCTZ/Hyzaar
- Metoprolol Succ./Toprol XL
- Metoprolol Tart./Lopressor
- Furosemide/Lasix
- Hydrochlorothiazide/HCTZ
- Potassium Chloride/ K-Dur or Klorcon

## Diabetes

- Metformin/Glucophage
- Canagliflozin/Invokana
- Glipizide/Glucotrol
- Pioglitazone/Actos
- Glimepiride/Amaryl
- Sitagliptin/Januvia

## Hyperlipidemia

- Atorvastatin/ Lipitor
- Fenofibrate/Tricor
- Rosuvastatin/Crestor
- Simvastatin/Zocor

## Neurological

- Carbamazepine/Tegretol
- Divalproex/Depakote
- Lamotrigine/Lamictal
- Levetiracetam/Keppra
- Oxcarbazepine/Trileptal
- Phenytoin/Dilantin
- Topiramate/Topomax